



**Butte County Resource Conservation District
Quarterly Newsletter, Spring 2010**

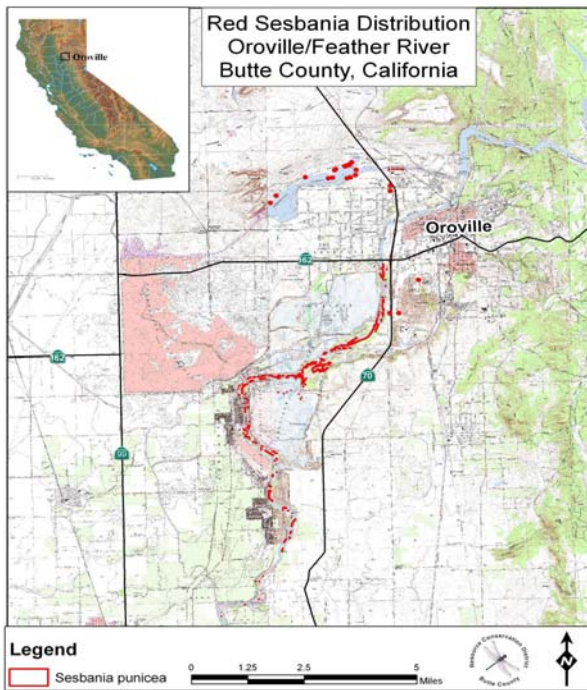
Butte County Resource Conservation District is leading the progress of working landscape and open space management in the county through unique and influential partnerships for the benefit of the citizens, the environment, and the economy.



Our motto is cooperation, not regulation

THE BANE OF SESBANIA!

The BC-RCD's Weed Management Area has kicked off the 2010 weed killing season by working on the upper extent of red sesbania infestations in the Lower Feather River. We are teaming up with our partners to treat approximately 10.25 acres one of the worst rated weeds. This is a multi-year project. This riparian invader is noxious because it forms



Map of red sesbania distribution on the Lower Feather River

dense thickets that out-compete native plants, makes river access difficult, and reduces quality habitat for wildlife including salmon. The initial treatment will thwart infestation downstream and is an essential component to the success of DWR treatments of red sesbania infestations located down stream in the Oroville Facilities Project Area/ Oroville Wildlife Area. The Project is funded through CA Department of Food and Agriculture.

WEED MANAGEMENT AREA (WMA)

June 15th, 10 am- noon
BC Farm Bureau Conference Room
Butte County WMA Quarterly meeting to discuss current invasive species challenges.

GLENN COUNTY FARMERS MARKET

Saturdays
Opening Day June 5th
Closing Day September 25th

JUNE 2010	JULY 2010	AUGUST 2010	SEPTEMBER 2010
Orland Library Park Saturdays 8am- 1pm	Willows Memorial Park Saturdays 8am- 1pm	Orland Library Park Saturdays 8am- 1pm	Willows Memorial Park Saturdays 8am- 1pm

GLENN COUNTY RCD TO HOST NEW FARMERS MARKET

The Glenn County RCD is developing the new Glenn County Certified Farmers' Market. Glenn County RCD is preparing for this years market season and is now taking applications from existing and new vendors. For more information or to participate in this exciting new venue visit www.glenncountyrcd.org



CCC remove red sesbania

NRCS ANNOUNCEMENTS

Applications for the Natural Resources Conservation Service (NRCS) Environmental Qualities Incentives Program (EQIP) are available throughout the year. For a full understanding the offered benefits of the NRCS Farm Bill programs, landowners are recommended to prepare confidential conservation plans which address multiple resource concerns. Good conservation planning takes time. Be sure to visit our office months before the annual deadlines for additional program information.

Now available nationwide, the NRCS Conservation Stewardship Program (CSP) is open for continuous sign up. Deadline for the annual funding cycle is June 11, 2010.

The Central Sacramento Valley Resource Conservation and Development Council has joined the Conservation Partnership Office. To contact NRCS Project Coordinator, Larry Akin and the Council call (530) 534-0112 x 121.

WELCOME HOME, DAN TAVENER!

The NRCS has relocated Dan Tavener, NRCS District Conservationist, to the Butte County Conservation Partnership Office.



Dan Tavener, District Conservationist

Dan is rejoining the Oroville staff after assisting the growers in southern Sacramento County. Dan, his wife, and their three children live in Gridley and are raising several 4-H animals.

LOWER FEATHER RIVER/HONCUT CREEK

Existing Conditions Assessment is completed! The document is available at www.scrd.org/programs/lfr.htm

LEOPOLD CONSERVATION AWARDS SEEKING NOMINATIONS

The Sand County Foundation is seeking nominations for the 2010 California Leopold Conservation Award. Nominations are due Monday, July 12, 2010. The award recognizes private landowners' commitment to responsible environmental stewardship and land management. For more information visit <http://suscon.org/news/releases/100215LeopoldAwdSeeksNominees.php>



HELP US HELP YOU!!

Your financial support of the BC-RCD will be used to develop new conservation programs for Butte County agricultural landowners. The more support local landowners show for their RCD, the more effective the Conservation Partnership Office can be to implement conservation on the ground. The BC-RCD is **100%** dependent upon grants and donations for its programs. Please visit the partnership office and learn for yourself how resource conservation can benefit you and your land.

The District is asking for your tax-deductible donation in order to continue to serve local landowners and local resources. If you would like to provide direct, tax-deductible financial support to the BC-RCD, please contact the Conservation Partnership Office at 530-534-0112 ex 122.

- **Thank you, in advance, for your support of BC-RCD's commitment to locally lead conservation efforts.**
- **Charitable contributions to BC-RCD are tax deductible under section 170(c)(1) of the IRS Code.**

